



Monte L. Bean
Life Science Museum
 Brigham Young University

Anne Yoder to Present Spring Tanner Lecture

Dr. Anne Yoder, Director of the Duke University's Lemur Center, will present this year's spring John Tanner Lecture. Dr. Yoder's Lecture, "The Past, Present, and Future of Madagascar's Biodiversity" will be held in the Museum's Auditorium on Thursday, March 25th at 7:00pm.

Madagascar has been called "the naturalist's promised land" due to its unique and extraordinarily diverse flora and fauna. It is the world's



Dr. Anne Yoder, with a lemur

4th largest island, although it comprises less than .04% of earth's land surface area. Despite its small footprint, it is home to a magnificent array of animal and plants, including more than half of the world's chameleons, six of eight species of baobab trees, and all of the world's lemurs.

Dr. Yoder's lecture will summarize some of the present-day human activities that threaten to destroy this biological treasure trove. The lecture is free to the public. mlbean.byu.edu

Children's Room Remodel

If you have visited the museum lately, you may have noticed that the Children's Room has been closed. Recently the Children's Room has undergone a special remodel which will enable the Education department of the museum to better serve the children and meet the education programming goals.

New additions to the room include a large white board for use by Discovery Reading and

other educational programs; as well as shelving to better display some of the education collection. The biggest news is the completion of the mural on the wall in the Children's Room. Randy Baker the museum Graphic Designer recently completed the hand painted mural. It includes more than 25 animal, plant, and insect images and covers the entire south wall. Watch for the Children's Room to re-open soon!



Randy Baker completes the mural in the Children's Room

See what's inside:

Education News	Page 2
2010 Photo Competition & Exhibit	Page 2
Museum News	Page 2
Unique Nativity Display	Page 3
WNAN turns 70!	Page 3
Director's Corner	Page 3
Shasta, the Liger	Page 4

Game Show Date Night!

Saturday, March 13, 2010

7:00 pm to 9:00 pm

Bring your date and enjoy a fun dinner and activity in the Museum!

See Page 2 for information

BRIGHAM YOUNG UNIVERSITY

Museum Newsletter

Volume 4 Issue 1

Winter 2010

Education News

SATURDAY SAFARI

Kids ages 5-12 can spend from 10:00 am to 12:00 pm on Saturdays learning about animals from all over the world! Cost is \$12 for the first child \$10 for each additional child in the same immediate family. Upcoming Safaris include:

Feb 13 Specialized Skin

Feb 20 Bodacious Babies

Feb 27 Tenacious Tails

Mar 6 Crazy Carnivores

Mar 13 Fantastic Feet

Mar 20 Climate Control

Mar 27 Daunting Defenses

Apr 3 Incredible Invertebrates

Come join the fun!



Museum Educator, Eliza Garlick, from American Fork, UT, teaches a group of boy scouts about reptiles at a live animal show.

NATURE EXPERIENCESHIPS

Feb 6th Birding on Antelope Island with Merrill Webb

Mar 6th Reptiles & Amphibians with Dr. Jack Sites

Spend a Saturday morning with an expert learning about nature. This program is open to ages 12 and up. Cost is \$10.

DISCOVERY READING

Come and hear stories about animals and nature read by a professional story teller!

Discovery Reading is held every Wednesday at 11:00 am in the Children's Room of the museum and is free to all!

LIVE ANIMAL SHOWS

Schedule a free live animal show at the Museum for your family or group. Shows can be scheduled by contacting the secretary at 801-422-5052.

Check out our website: mlbean.byu.edu

2010 Nature Photography Competition and Exhibition

The Annual Nature Photography Competition and Exhibition returned to the Bean Life Science Museum on February 5th.

Both amateur and professional photographers were invited to participate. All photos must be taken in natural outdoor settings.

There was an opening reception on Friday, Feb 5, 2010 at 7:00 pm at the museum's center atrium.

Awards were given in the following categories,

Animal Wildlife, Bird Wildlife, Man & Nature, Landscape, and Nature. In addition, awards are presented for: Best of Show, Museum's Choice Purchase, People's Choice, and Allen's Camera Excellence Award.

The exhibition is located in the Bean Room of the Museum and runs until March 8, 2010.

Please contact Randy Baker, 801-422-3811 for questions.

Photo by Joy Gough,

2009 Museum Choice Award Winner



Museum News

Date Night

A fun Game Show Date Night will be held at the Museum on Saturday, March 13th. Date Night is for couples of all ages. Cost is \$15 per couple. Activities include a "family feud" style game show activity and a yummy pizza dinner.

Make sure you sign up soon as this popular event fills up fast! To sign up call 801-422-5051.

See our website for more details, mlbean.byu.edu

Butterfly display made entirely of butterflies. Photo by Randy Baker



Exhibit Spotlight—Giant Butterfly!

Have you every seen a giant butterfly made out of butterflies? One of our most popular attractions is our Butterfly exhibit which features a butterfly almost four feet tall constructed entirely of butterflies!

Also included in this exhibit is information about butterflies, the difference between a butterfly and a moth, and several species of butterflies.

The museum invites the public to visit this exceptional exhibit and learn more about butterflies.

mlbean.byu.edu

Unique Nativity—At the Museum

Every Christmas the Bean Life Science Museum prepares a special Nativity exhibit. This year the exhibit took on a new life in terms of size and the number of animals included in the exhibit.

With its connection to Brigham Young University, the Bean Life Science Museum has the unique opportunity of using this exhibit to testify of Christ as the Creator. “While most public buildings avoid religious displays during Christmas, this museum embraces the opportunity to highlight the Christ child surrounded by His remarkable creatures.” states Patty Jones, museum administrator.

This exhibit is an annual event. Every Christmas Season, Kenneth Packer and his exhibit team work diligently on this exhibit, making it unique every year. “Next year we are planning several surprises for the exhibit”, says Kenneth Packer.

Don’t miss this exciting exhibit next Christmas, it’s a wonderful opportunity to share the spirit of the season with friends and family at the museum.

We look forward to providing the Nativity exhibit to the public for years to come.

2009 Nativity Exhibit in the Center Atrium of the Bean Life Science Museum.



WNAN Celebrates 70th Birthday

This year the *Western North American Naturalist* (formerly *Great Basin Naturalist*) will publish its 70th volume of natural history research. The first volume of the journal appeared in 1939, over 70 years ago. Dr. Vasco M. Tanner was instrumental in getting the journal into production and served as editor for the first 30 years.

The *Western North American Naturalist* publishes research by scientists mostly hailing from the western United States, western Canada, and Mexico. In an effort

to make the journal’s contents more readily available, electronic files of all back issues were released just this past year on the journal’s web site. BYU’s Harold B. Lee library also distributes current print issues to other libraries around the world in exchange for valuable books and journals.

Besides the editor-in-chief, Dr. Mark Belk, and the assistant editor, Dr. Janene Auger, the journal’s staff has grown to include 23 volunteer associate editors and 3–5 student employees who assist in pre-

paring manuscripts for publication. These articles feature basic information about important species and natural phenomena—information that remains valuable to the scientific community for decades after initial publication.

To find the journal’s office in the Museum, look downstairs for the spotted skunk doing a handstand. For more information about the journal visit <https://ojs.lib.byu.edu/ojs/index.php/wnan>

Congratulations to the *Western North American Naturalist*!

Director’s Corner-Dr. Larry St. Clair



Dr. Larry St. Clair, Director, Bean Life Science Museum

We continue to work towards raising funds for the expansion of the museum and we now have more than \$8.5 million cash in hand! We also received a generous gift from the

Scheuber family estate for the support of the Lytle Ranch Preserve. Sister Scheuber passed away in late 2008; she had been a great friend of the Lytle Preserve for many years. We sincerely appreciate the generosity of our donors and patrons!

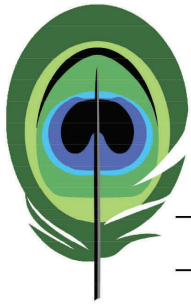
Last year close to 100,000 guests visited

the museum—more than half of them public school children. Bringing the museum’s full mount elephant back to the center atrium has been exciting for our visitors and the exhibits team has been very effective at adjusting the center atrium exhibit to keep it engaging and interesting.

Early in 2010, there are several exciting events the museum is hosting—in mid-February the Utah Science Teachers Association will hold their annual meeting here and then at the end of March we will have Dr. Anne Yoder from Duke University here to give our spring Tanner Lecture. We have also completed a major remodel of the south end of the insect range with the addition of new –80° C freezer space for the museum’s large

archival tissue collection and the installation of a walk-in –20° C freezer; the freezer dramatically reduces the amount of chemicals traditionally used to protect these collections from pests.

The museum education team continues to add “stops” to the audio cell phone tour and by the end of 2010 there will be approximately 100 stops—where visitors can use their cell phones to access interesting information about the museum’s exhibits. The museum staff will wrap up our reaccreditation efforts with the American Association of Museums this spring—this has been a long and demanding process but the singular honor of being accredited is essential to the ongoing success of the museum.



Monte L. Bean

Life Science Museum

Brigham Young University

BRIGHAM YOUNG UNIVERSITY

645 East 1430 North

Provo, UT 84602

East of the Marriott Center

Admission is **FREE**

Check out our website!

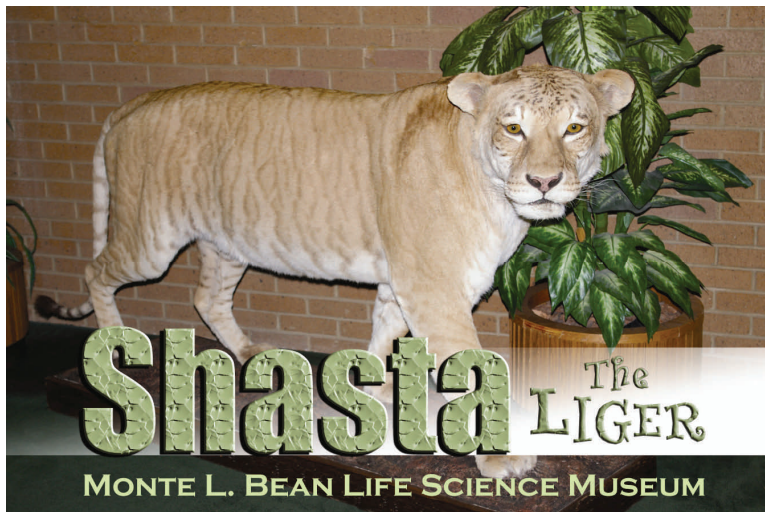
mlbean.byu.edu



Shasta, the Liger!

The female liger, Shasta, was the darling of the Hogle Zoo; she received tens of thousands of visitors in her lifetime—especially children. Nearly 40 years after she passed away, Shasta still has a following of faithful fans. She was born May 6, 1948, at Hogle Zoo in Salt Lake City, UT. Her parents were Huey, a male African Lion; and Daisy, a female Bengal Tiger. Shasta died July 12, 1972 at the age of 24.

A liger is a hybrid offspring of a male lion and a female tiger. Another crossbreed is the tigon, which comes from a male tiger and a female lion. Ligers and tigons do not occur in nature but have been produced in zoos in various parts of the world. In nature, isolating mechanisms such as reproductive behavior and geographical isolation prevent this type of crossbreeding. Genetically, lions and tigers are similar enough that female hybrids are fully fertile, but male hybrids may be sterile. Recently, however, most zoos have discontinued hybridization



practices in order to present a more professional and scientific image.

The Bean Life Science Museum secured Shasta as part of its permanent collection in November 1997.

Several patrons remember Shasta as a resident of the Hogle Zoo and are eager to

share their memories with their children. “Almost daily, patrons can be heard telling their children that they remember Shasta when she resided at the Zoo,” says Patty Jones, museum employee. “It is so fun to see patrons enthusiastic about seeing Shasta again and sharing those feelings with the next generation.”

The museum is grateful to have such a popular resident and

looks forward to watching as Shasta’s legacy is passed on to new generations of fans!

Come see Shasta and the rest of the Bean Life Science Museum. Hours are 10:00 am to 9:00 pm Monday through Friday, and 10:00 am to 5:00 pm on Saturdays. Admission is FREE!